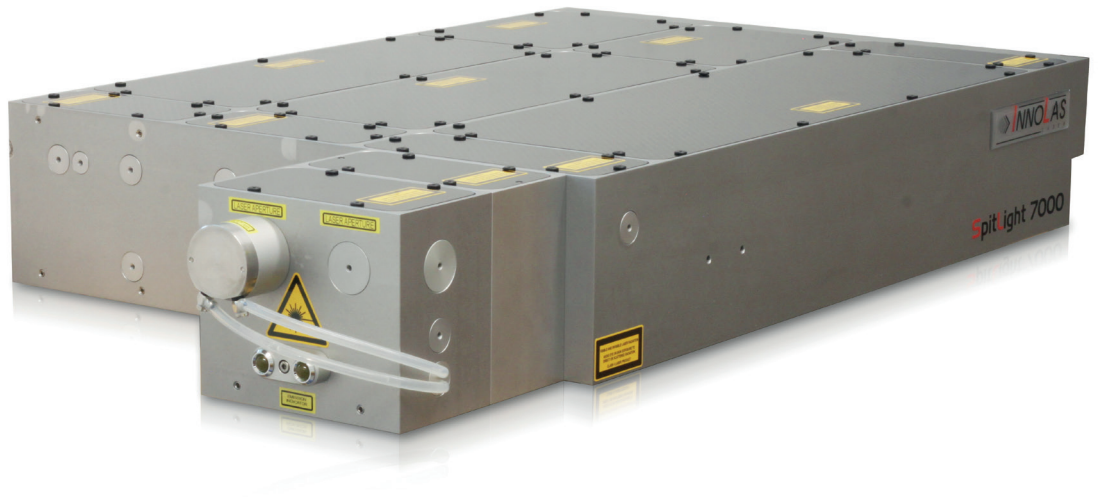


SpitLight

Scientific Lasers

SpitLight 7000



Features

- * Established and reliable laser base with extremely compact design
- * Well-proven Power Supply and Software
- * Small Footprint (~ 60% smaller than comparable products)
- * Excellent Short and Long Term Stability
- * Quick and easy replacement of Flashlamps
- * System can be Injection Seeded for Single Longitudinal Mode operation

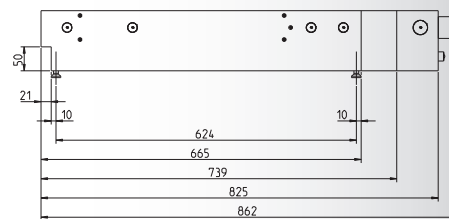
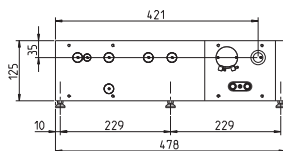
SpitLight 7000

Model	SpitLight 7000
Repetition rate	Specifications @ 3 Hz (available up to 10 Hz)
Pulse Energy [mJ]	
Pulse Energy @ 1064 nm	> 7 J
Pulse Energy @ 532 nm	> 4 J
Pulse Energy @ 355 nm	> 2 J
Pulse Energy @ 266 nm	> 0.6 J
Energy Stability	
Energy Stability @ 1064 nm (RMS)	< 0.8%
Energy Stability @ 532 nm (RMS)	< 1.3%
Energy Stability @ 355 nm (RMS)	< 2.0%
Beam Parameters	
Pulse Width	6-10 ns
Divergence	< 5 mrad
Pointing Stability	< 40 μ rad
Beam Diameter	~ 16 mm
Operating Parameters	
Cooling Water	8 l/min, 2-6 bar, < 15° C

Weights and Dimensions

Dimensions Laser Head (L x W x H)

665 x 478 x 125 mm



InnoLas follows a policy of continuous product improvement. All specifications are subject to change without notice.

InnoLas Laser GmbH is DIN EN ISO 9001 certified.

InnoLas Laser GmbH | Justus-von-Liebig-Ring 8 | 82152 Krailling | Germany
Phone: +49 (89) 899 360 - 1400 | Fax: +49 (89) 899 360 - 1499
E-mail: info@innolas-laser.com | Homepage: www.innolas-laser.com

